

Australian Early Development Census (AEDC)

Presentation for LGAT:
Creating & Funding Great Playgrounds
& Playspaces Forum
October 2018

Common issues in adulthood have their roots in early childhood

Physical health

diabetes, obesity,
cancer, heart
disease

Mental health

depression, ADHD,
aggression

Risk behaviour

substance abuse,
early sexual activity

Academic

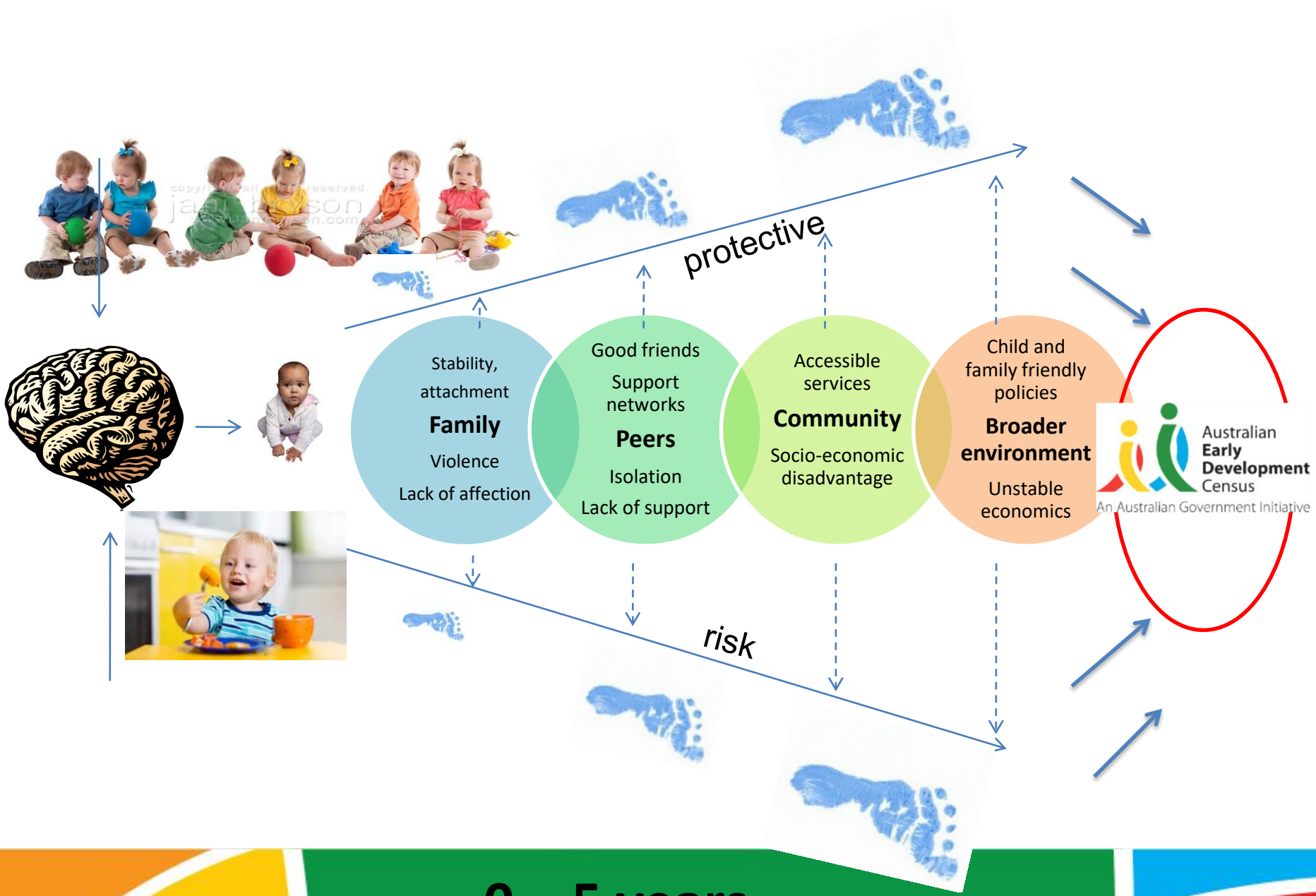
truancy, early school
leaving

Social

crime, children in
care

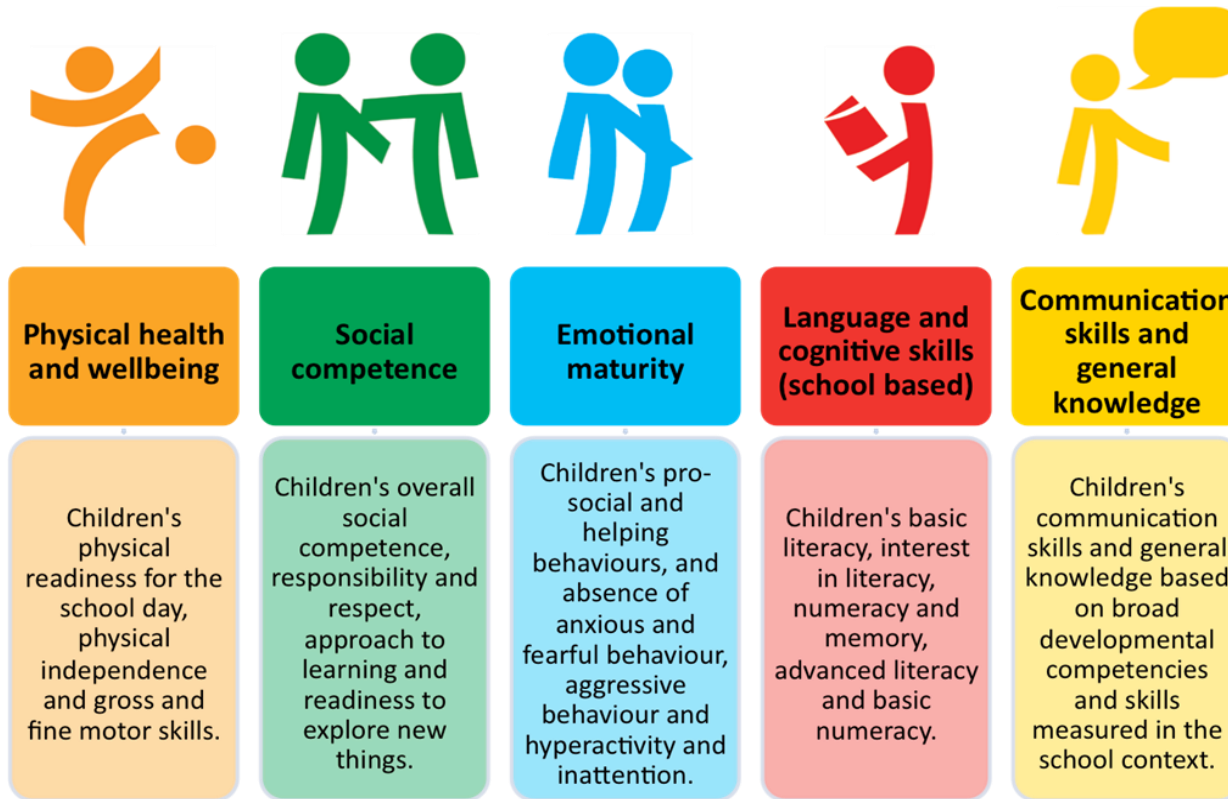
Developmental

poor literacy,
poor attachment,
poor cognitive
development



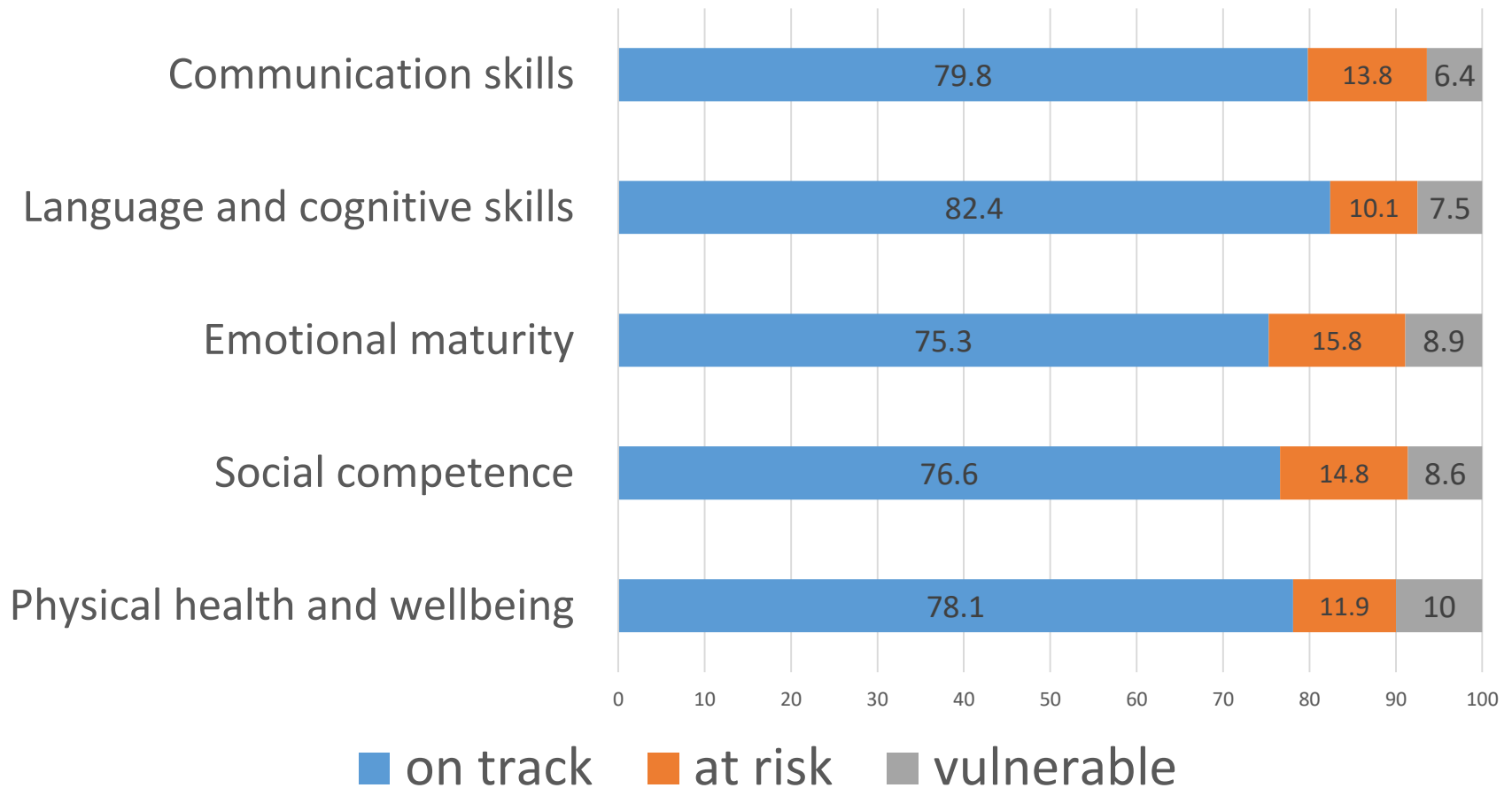
0 – 5 years

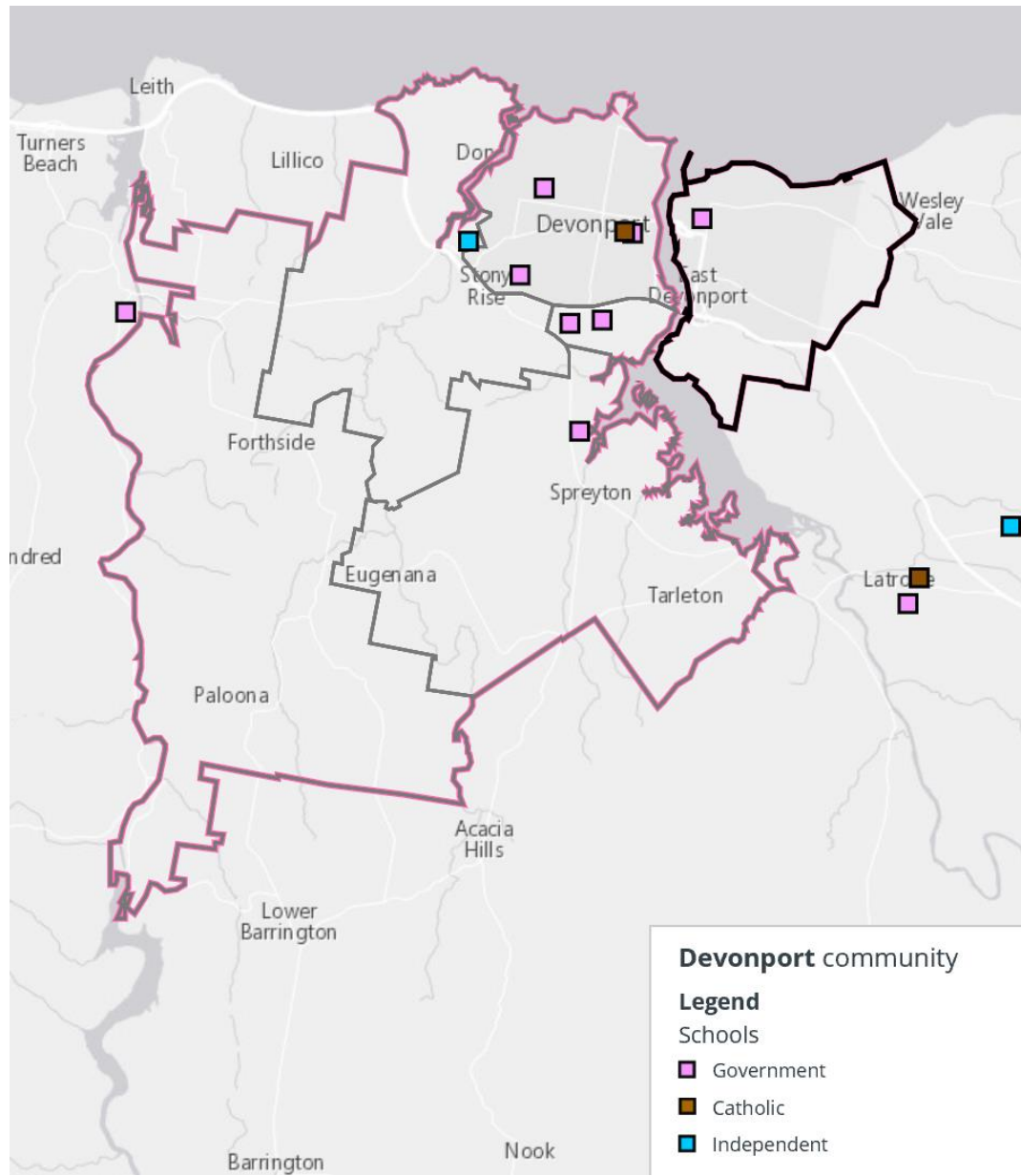
A measure of child development across 5 domains



Measures the proportion of children developmentally on track, at risk and developmentally vulnerable

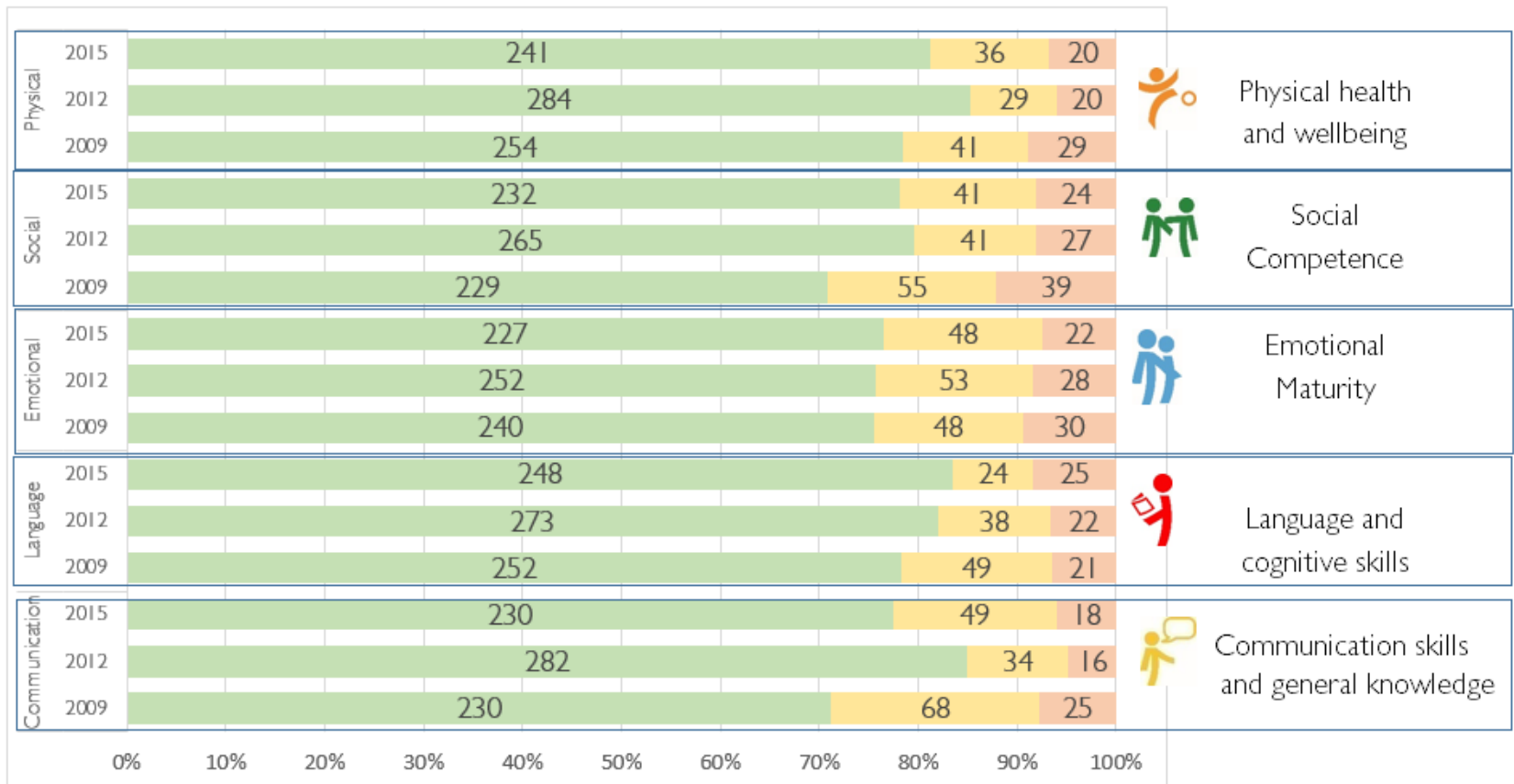
2015 Tasmanian AEDC results





Most children are doing well

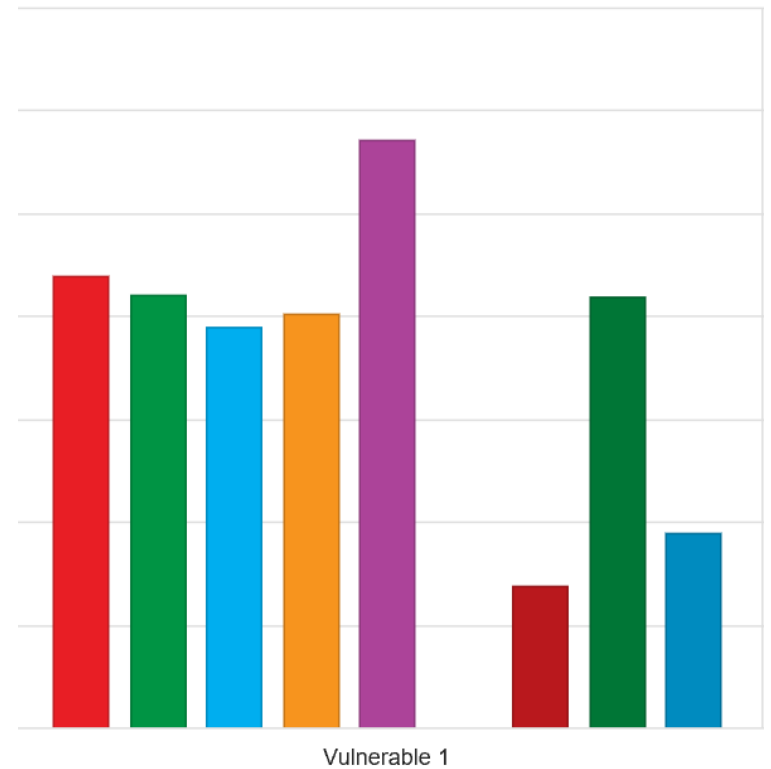
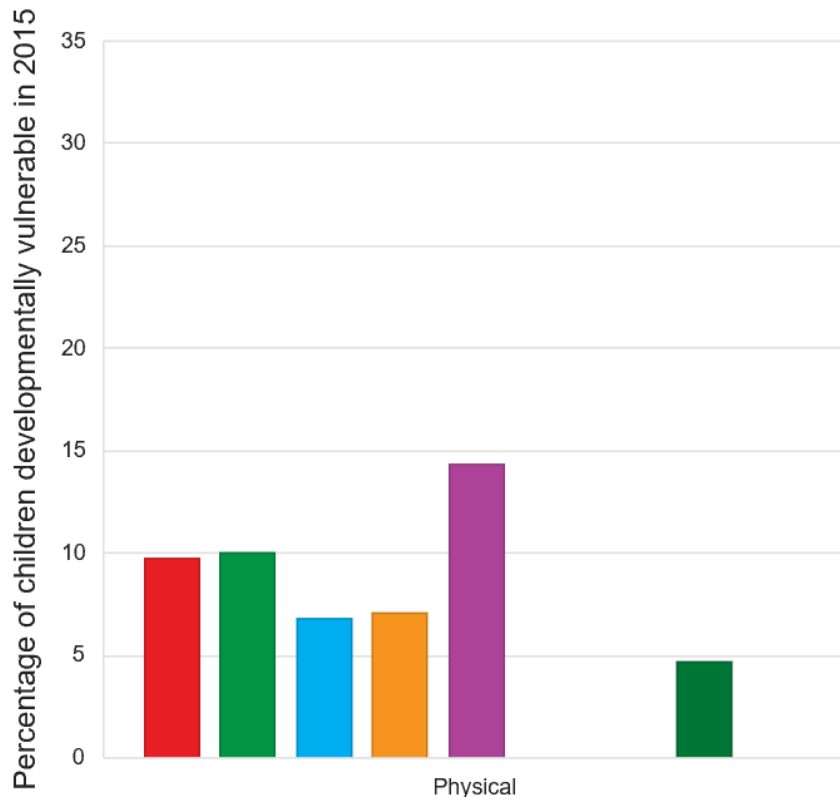
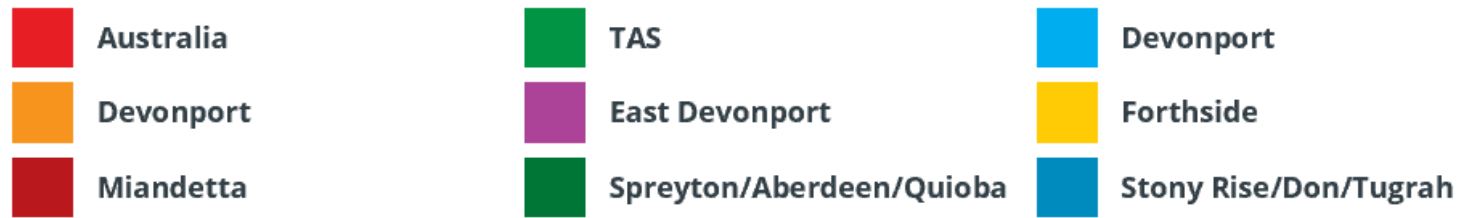
Percentage and Number of children developmentally on track, at risk and vulnerable by AEDC domains



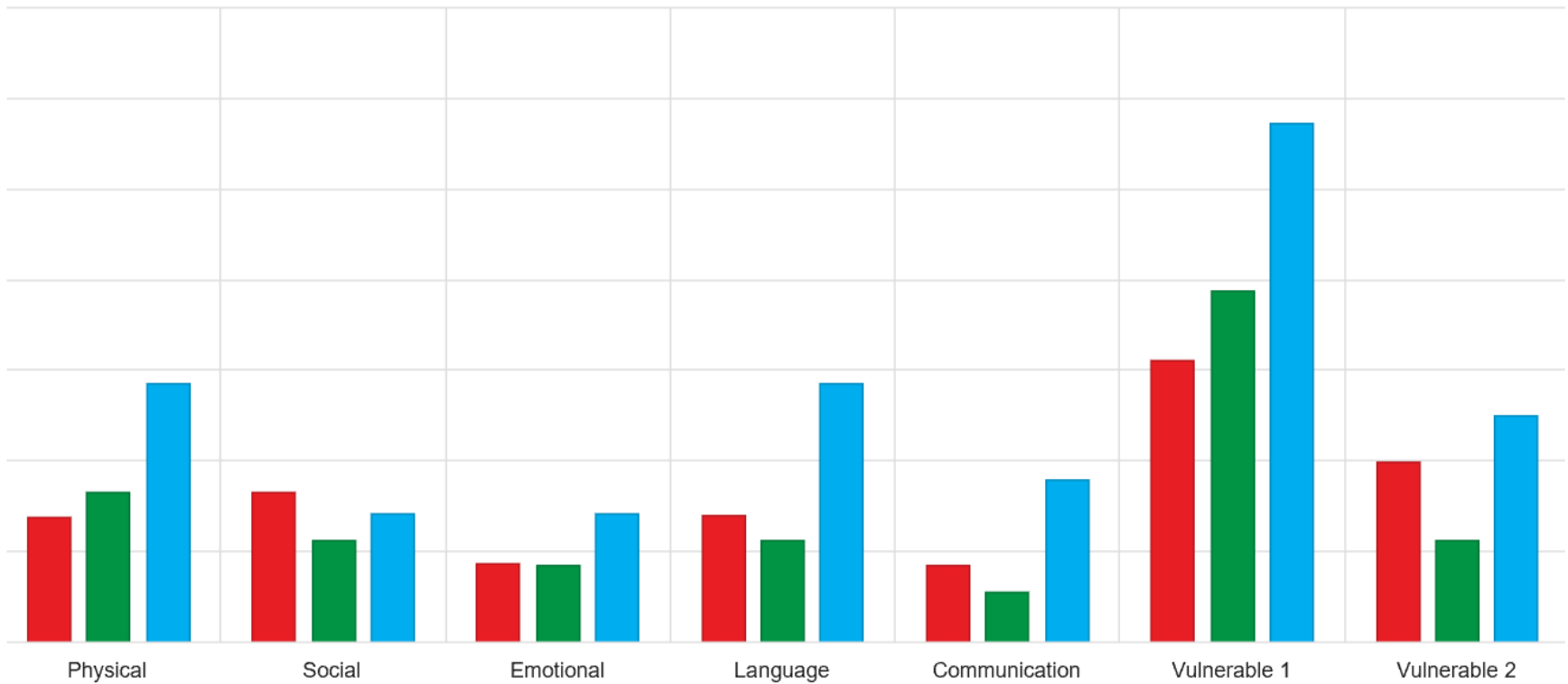
Percentage of children developmentally vulnerable in 2015

Geography	Physical <small>i</small>	Social <small>i</small>	Emotional <small>i</small>	Language <small>i</small>	Communication <small>i</small>	Vuln 1 <small>i</small>	Vuln 2 <small>i</small>
Australia	9.7	9.9	8.4	6.5	8.5	22.0	11.1
TAS	10.0	8.6	8.9	7.5	6.4	21.0	10.7
Devonport	6.8	8.1	7.5	8.5	6.2	19.5	10.4
East Devonport #	14.3	7.1	7.1	14.3	8.9	28.6	12.5

GRAPH: Percentage of children developmentally vulnerable in 2015



East Devonport



East Devonport Child and Family Centre

<https://youtu.be/2d7TgpITsdg>

East Devonport Child and Family Centre (3:11 mins)



2018 Results

School data released November 2018
Community data released March 2019



Devonport LGA AEDC Snapshot

For queries contact:
Christine Woolley
AEDC Co-ordinator
aedc@education.tas.gov.au
03 6165 5708
www.aedc.gov.au



LGA Demographics | Devonport (C) | Tasmania | Australia

% of 0-4 year olds in LGA	5.7	5.6	6.3
No. 0-4 year olds	1 406	28 469	1 464 779
% Attended Preschool	99	97.7	91.3
% Live with a single parent	3.4	2.5	1.5
% Moved home in last 12 months	13.7	14.3	15.8
% Parent unemployed	7.6	6.3	5.6
% Parents completed Year 12	28.6	39.5	53.6
Disadvantage (ABS SEIFA)	902	940	1000

Data Source: Australian Bureau of Statistics 2016 Household Census and 2015 AEDC

Key predictors of vulnerability

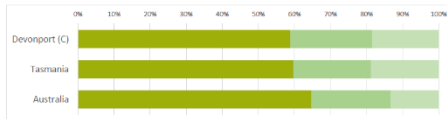
Number and percentage of children in LGA who are developmentally vulnerable of those who were not adapting, engaged or read to. For example, in 2015, 64.3% of all 25 children who were not read to, 16 were developmentally vulnerable.

	2009		2012		2015	
	No.	%	No.	%	No.	%
Children not adapting to school	2	66.7	5	83.3	4	100.0
Parents not actively engaged in school	11	55.0	9	40.9	12	60.0
Children not regularly read to	9	75.0	10	52.6	16	64.0

Local Communities
Devonport
East Devonport
Forthside
Mandetta
Spreyton/Aberdeen/
Quibou
Story Rise/Don/
Tugrah

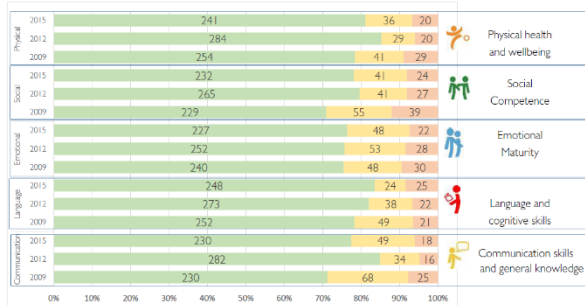
Multiple Strength Indicator 2015

Proportion of children with completed AEDC instruments



Highly developed strengths		Well developed strengths		Emerging strengths		Total	
No.	%	N	%	N	%	N	%
175	58.9%	67	22.6%	55	18.5%	297	
3 678	59.7%	1 326	21.5%	1 155	18.8%	6 159	
159 942	64.8%	64 639	22.0%	62 195	13.3%	286 776	

Percentage and Number of children developmentally on track, at risk and vulnerable by AEDC domains



Percentage of children developmentally vulnerable on one or more domains (DVI) by AEDC domains
The final column highlights whether the results between 2009 and 2015 have significantly changed or not

LGA	Devonport (C)						Significance 2009-15
	2009		2012		2015		
	No.	% Vul	No.	% Vul	No.	% Vul	
Males DVI	171	28.7	163	28.8	160	26.3	No change
Females DVI	150	16.0	170	8.8	137	10.9	No change
ATSI DVI	17	41.2	31	16.1	38	28.9	No change
Non-ATSI DVI	304	21.7	302	18.9	259	17.8	No change
LGA DVI	321	22.7	333	18.6	297	19.2	No change
Tasmania DVI	6 583	21.9	6 086	21.5	6 159	21.0	No change
Australia DVI	127 253	30.3	137 119	28.2	143 970	28.5	Improved



If there is time 😊







What do you think
is influencing
children's
development in
your community?

One in five!

2015

1 in 5 children
entered school
developmentally
vulnerable

